

# SOCIAL RETURN ON INVESTMENT

SROI of £9.06 for every £1 spent on the Healing Together facilitators programme

£1 of spending =  
**£9.06**

SROI of £19.62 for every £1 spent on delivering the Healing Together programme with children & young people affected by domestic abuse.



£1 of spending =  
**£19.62**

SROI of £4.19 for every £1 spent on the online training programme supporting CYP affected by domestic abuse.



£1 of spending =  
**£4.19**

SROI of £2.12 for every £1 spent on the 2 day trauma informed training.



£1 of spending =  
**£2.12**



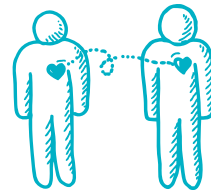


powered by  
**innovatingminds**

  
**healingtogether**

Social Return on Investment is a type of cost benefit analysis that is calculated using financial values (proxies) for each outcome the programme delivers. To make sure we do not overstate or over claim for the contribution Innovating Minds has made to each outcome (as we recognise that other practitioners/agencies will also be contributing to these outcomes) the figures are adjusted to identify the proportion of the outcomes we can claim we have delivered.

Analysis completed by Make an Impact CIC, August 2023.



For each child that has learnt techniques for **managing their emotions** as a result of the Healing Together programme has a monetary value of **£2,066 per child**.



For each child that has **improved educational attainment** as a result of the Healing Together programme has a monetary value of **£9,562 per child**.



For each child that **reduces its likelihood of being involved in criminal activity** as a result of the Healing Together programme has a monetary value of **£4,251 per child**.

